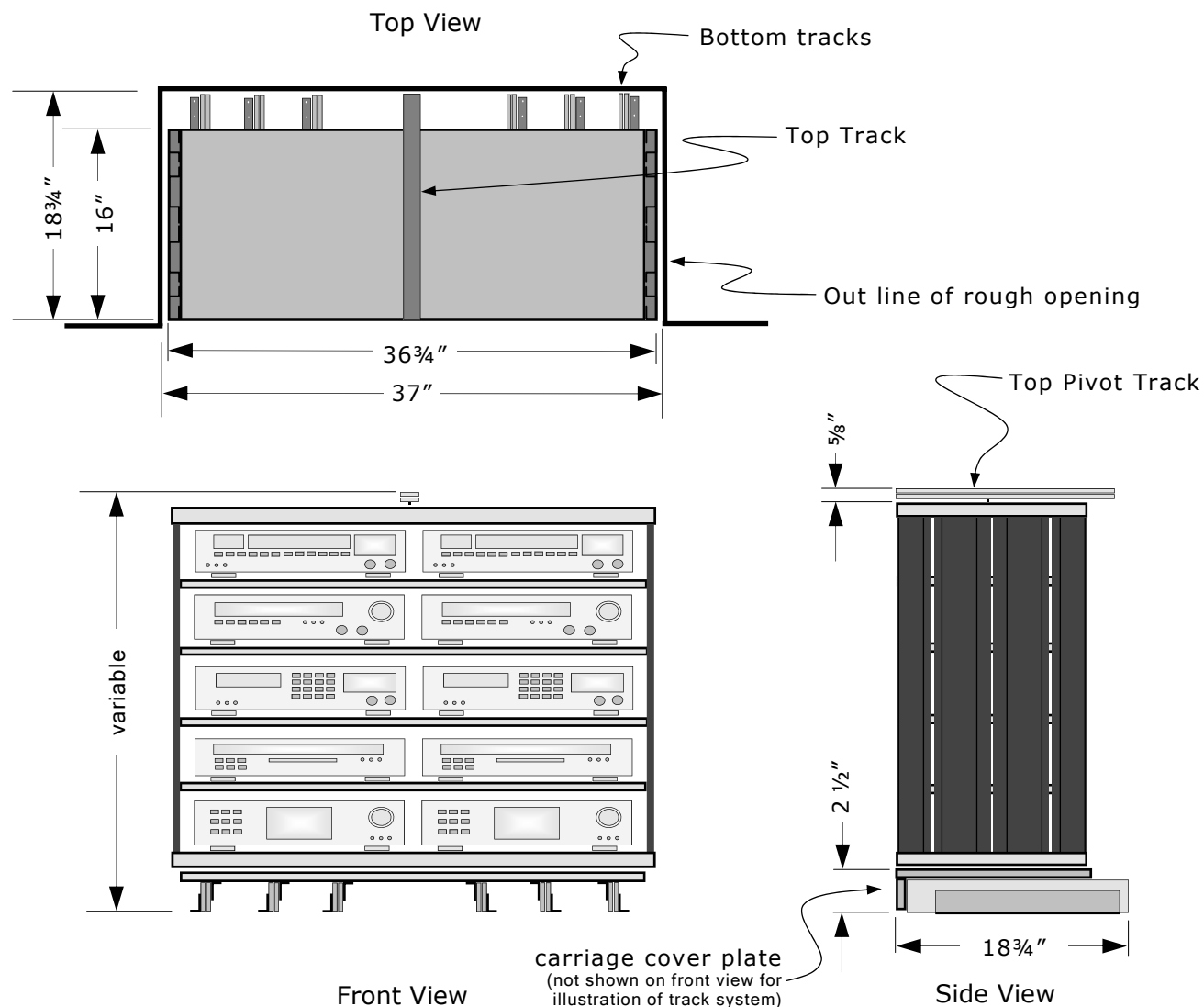




Fatrak Tech Sheet

January 2010



| faträk | Unit Number | Minimum Rough Opening H x W x D | Maximum Component Clearance | Weight Rating | Shelves |
|--------|-------------|------------------------------------|--------------------------------|------------------|---------|
| | FT-48 | 48"x 37"x 18 3/4" | 34 1/2"x 35 1/2" | 500 lbs | 7 |
| | FT-42 | 42"x 37"x 18 3/4" | 29 3/4"x 35 1/2" | 500 lbs | 6 |
| | FT-36 | 36"x 37"x 18 3/4" | 25"x 35 1/2" | 350 lbs | 5 |
| | FT-30 | 30"x 37"x 18 3/4" | 20 1/4"x 35 1/2" | 350 lbs | 4 |
| | FT-24 | 24"x 37"x 18 3/4" | 15 1/2" x 35 1/2" | 250 lbs | 3 |

- The "Maximum Component Clearance" (MCC) is the total height of all the components to be installed in the unit. Half inch of air space allowed for each shelf in the MCC measurement.
- Castor base mount only for FT-42 & FT-48, pull out carriage assembly not available for high load ratings.
- Shelf count includes the bottom fixed shelf. All adjustable shelves are standard 3/4" thick. Upgrades available.
- Custom cut heights available.

Manufactured by *Avrak Manufacturing Ltd*
Kelowna, BC, Canada

Ph: 250-765-5101

Toll Free: 888-973-3550

www.avrak.com